

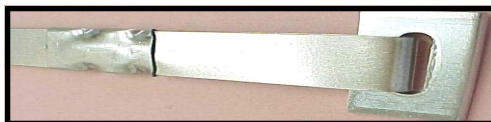


# Tie-Downs and Accessories



## ◀ Hook Frame Ties

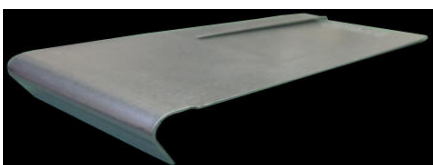
\*Hooks to I-Beam under home.  
**10042**- 7' Length **10043**- 8' Length  
**10044**- 10' Length **10045**- 12' Length



**10048**- 8' Frame Tie with Buckle ▲  
 \*Eliminates the possibility of hook slipping off the frame.



▲ **10008**- Split Bolt with Nut \*8 per package. One of those staple items you just can't live without.

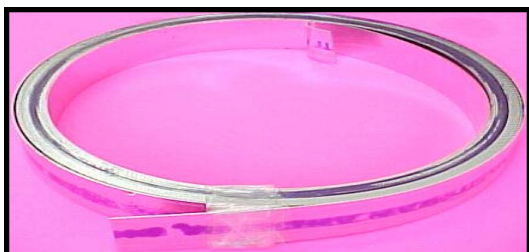


◀ **10011**- Strap Protector Clip \*For use between strap and I-Beam- prevents cutting and breaking



▲ **10033**- Strap Buckle  
 \*For splicing or extending 1 1/4" Galvanized Steel strap.

**10046**- 7' Corner Frame Tie ▶  
 \*For diagonal use at perimeter corners, or marriage line anchors. Use with #**10054** mounting bracket.



▲ **Galvanized Steel Strapping**  
 1 1/4" wide, marked and certified G-60  
**10037**- 37' Roll  
**10038**- 100# Roll  
 \*Approximately 600' Long. (G-120 strap available upon request)



▲ **10054**- Mounting Bracket for #**10046** Corner Tie. Connects frame tie to bolt nearest anchor.



▲ **10040**- Hook Only for Frame Tie  
 \*To be used with 1 1/4" Galvanized Steel Strap.



**10015**- Crimping Tool ▲  
 \*For crimping or splicing 1 1/4" steel strap. Use with #**10010** strap seal.



◀ **10010**- Strap Seal  
 \*For crimping 1 1/4" galvanized steel strap. Used to secure or extend existing lengths of galvanized strap.

Set-Up/  
Transport

For anchors see page 78.

