



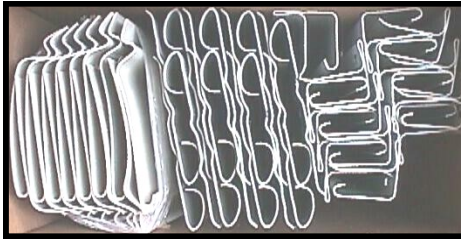
# ECONOMY VINYL SKIRTING



\*Carton Quantity: 12 pieces. Panels are 140" Tall x 16" Wide.  
Panels can be sold singularly or by the carton!

## Vented Panels ▲

**70304-E- Sand 70307-E- Tan 70350-E- Grey 70330-E- White 70320-E- Clay**  
(Clay Trim available in Lifetime only, see next page)



## ▲ Trim Kits

\*Includes 15 pieces each of Top Back, Top Front, and Ground Channel. Ground Spikes and screws not included. Enough trim to cover up to 165 lineal feet.

**70380-E- Grey 70360-E- White**  
**70390-E- Tan 70400-E- Sand**

## Solid Panels ►

**70304-ES- Sand**  
**70307-ES- Tan**  
**70309-E- Grey**  
**70310-E- White**  
**70319-E- Clay**  
(Clay Trim available in Lifetime only, see next page)



Exterior Refurb

## Top Front Rail- 11' Length ►

**70346-E- Grey**  
**70356-E- White**  
**70376-E- Tan**  
**70402-E- Sand**



## ◀ Top Back Rail- 11' Length

**70345-E- Grey**  
**70355-E- White**  
**70375-E- Tan**  
**70401-E- Sand**

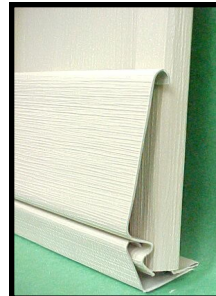
**Weed-Eater Guard**  
(It's actually a Top Front Rail Upside-Down, but it works!) ▼



Snaps in ground channel, provides extra 4" of protection from weed trimmers- 11' length.



**70346- Grey**  
**70356- White**  
**70376- Tan**  
**70402- Sand**  
**70326- Clay**



## ▲ Ground Channel-11' length

**70347-E- Grey**  
**70357-E- White**  
**70377-E- Tan**  
**70403-E- Sand**

For more skirting items see page 78.  
For a usage chart, see page 72.  
For screws, see page 81.

