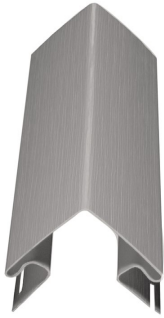
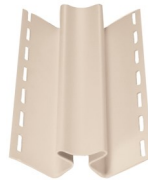




VINYL SIDING TRIM AND MOUNTS



◀ 3" Vinyl Outside Corner Post- 10' Length
43010- White
43010-AD- Pebble Clay
43010-CS- Classic Sand
43010-SM- Sunny Maize
43010-SW- Sandalwood
43010-C- Any Color Not Mentioned Above



◀ 1 3/8" Inside Corner Post-10' Length
43009- White
43009-C- Any Color Except White



◀ **43017- 3/4" Non-Flexible Vinyl "Super" J-Channel- 12' Length - White Only**



▲ 5/8" Flexible Vinyl J-Channel- 12' Length
43015- White
43015-AD- Pebble Clay
43015-SW- Sandalwood
43015-C- Any Color Not Mentioned Above



◀ Vinyl Under-Sill Trim- 12' Length
43025- White
43025-C- Colored



◀ **43027- F-Channel- 12' Length- White only**
 (For trimming out soffit panels, see previous page)



◀ **43029- Snap-In Crown Molding Trim- 12' Length- White only**



◀ **43020- Aluminum Starter Strip- 10' Length**



◀ **43028- Retaining Trim for Snap-In Crown Molding- 12' Length - White only**



◀ **43018- 1 1/2" Vinyl Door/Window Molding- 8' Length- White**



43030
6 1/2" Fascia Trim-10' Length- White only



▲ **43061- Vinyl Mount for Exterior Light Fixture White Only- 7 1/4" x 8"**



▲ **43060- Vinyl Mount for Exterior Receptacle- White Only-5" x 6 3/4"**

Outside Corners, 5/8" J-Channel, Under-Sill Trim, F-Channel and Inside Corners are available in the following colors - White Birch, Classic Sand, Warm Sandalwood, Sunny Maize, Summer Wheat, Harbor Stone, Soft Willow, Pebble Clay, Basket Beige, Slate Blue, Graphite Gray, Artisan Clay, Meadow, Java, Seagrass, and Nutmeg. All other trim items are only available in white!

Exterior Refurb

For dryer vent covers, see page 60.

