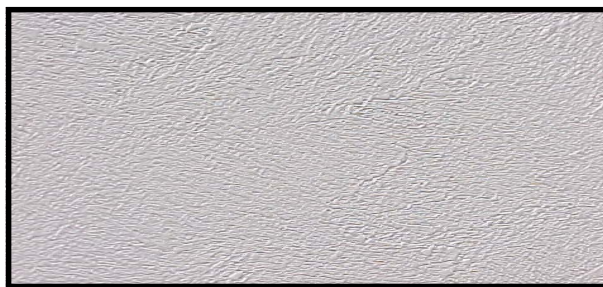




# WALL PANELING AND ACCESSORIES



◀ "Ruff-Stuff" Wallboard  
 \*Vinyl-Covered- White, "rolled-on texture" style finish.  
 Luan/ Wood Paneling- 1/8" Thick  
**99915- 4' x 8'**    **99916- 4' x 9'**  
 Sheetrock- 5/16" Thick  
**99920- 4' x 8'**    **99922- 4' x 9'**  
**99909- Unfinished Sheetrock- 4' x 9'**

Interior Refurb



▲ **99109- 4' x 8' Smooth Wood Paneling-**  
 1/8" Luan paneling. Medium Pecan finish to match our interior molding. Great for wainscoting.



▲ **99114- 4' x 8' Grooved Wood Paneling**  
 \*Like our smooth paneling, 1/8" Luan with Medium Pecan finish to match our interior molding.

# CEILING ITEMS



We are sorry, but we do not sell ceiling panels.

◀ **95016- White Ceiling Batten- 1 5/8" Wide- 13' 6" Long**  
**95017- White Ceiling Beam- 4" Wide- 12' Long**  
**95018- White Ceiling Beam- 6" Wide- 12' Long**



◀ **1" Paneling Nails**  
 \*Approximately 300 nails per carton. Sold by the carton only.  
**48400- Medium Brown Finish**  
**48400-W- White Finish**



◀ **99000- Kilz Spray Aerosol Primer/ Sealer**  
**99001- 1 Gallon Pail**  
**99002 - 5 Gallon Pail**  
 \*Stain Blocker. Primes, seals, and hides stains. Fast drying, no bleeding. Flat, white flush.



◀ **99003- "KILZ" Upshot Aerosol Interior Oil-base Stain Sealer- Off-white**  
 \*Unique vertical spray tip- Great for blocking ceiling stains like water, smoke and grease- Dries fast- ready for topcoat after 15 minutes- Works on most interior surfaces.

**99010- Acoustic Texturing- Spray Aerosol**  
 \*For patching "popcorn" type ceilings. Contains actual polystyrene chips to match professionally spray-on ceilings. Coverage: Up to 2 square feet. Water based, contains no fluorocarbons or VOC's



◀ **99106- White Plastic Rosette-**  
 \*For use with #99107



◀ **99107- White Screw for #99106 Rosette-**  
 \*6 x 1 1/4" Phillips head.

