



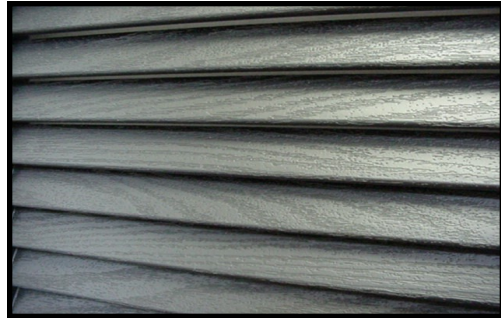
# VINYL WINDOW SHUTTERS

Windows



**\*Manufactured by The Tapco Group. \*Sold per pair.**  
**\*Durable copolymer material, color molded throughout- UV stabilized. \*Made to withstand the toughest weather conditions. \*1" Thick. 2 different styles- 13 different lengths- 17 different colors. \*Maintenance free. Won't chip, rot, or warp.**  
**\*Includes fasteners, Limited Lifetime Warranty, and installation instructions.**

Use on any surface including wood, aluminum, vinyl, stucco, fiber cement, brick, stone or masonry. Holds tight in any material.



Simple installation- you don't need clips or templates to install these shutters. Just drill holes into the shutters and housing material and install our color-coordinated Shutter-Lok® fasteners quickly and easily by tapping into place.



▲ Deep simulated wood-grained texture, formed edges and corners.

Open Louver - Quarter-Round Arch Tops



Louvered Shutter Part Number	Shutter Size (Width x Height)
15531	14 1/2" x 31"
15536	14 1/2" x 36"
15539	14 1/2" x 39"
15543	14 1/2" x 43"
15548	14 1/2" x 48"
15520	14 1/2" x 52"
15550	14 1/2" x 55"
15560	14 1/2" x 60"
15564	14 1/2" x 64"
15567	14 1/2" x 67"
15572	14 1/2" x 72"
15575	14 1/2" x 75"
15580	14 1/2" x 80"

Standard Colonial Raised Panels



Colonial Shutter Part Number	Shutter Size (Width x Height)
15631	12" x 31"
15635	12" x 35"
15639	12" x 39"
15643	12" x 43"
15647	12" x 47"
15651	12" x 51"
15655	12" x 55"
15659	12" x 59"
15663	12" x 63"
15667	12" x 67"
15671	12" x 71"
15675	12" x 75"
15680	12" x 80"

17 Colors available: White, Black, Wedgewood Blue, Clay, Federal Brown, Musket Brown, Tuxedo Grey, Wicker, Burgundy Red, Forest Green, Classic Blue, Wineberry, Bright White, Midnight Green, Midnight Blue, Bordeaux, and a blank "paintable" color. See our representation of colors at [www.randgsupply.com](http://www.randgsupply.com).

For orders or inquiries, refer to the **part number** to confirm width, then refer to the **Color** (Example: 15520 )

